


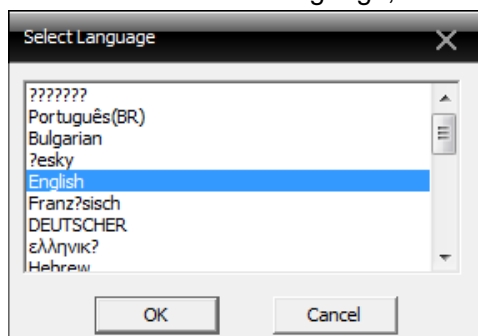
PTZ IP Camera Quick Setup Guide

1,Install CMS (CMS V3.1.0.3.T.20150716) software

I ,Please put CD into your CDRom (If your PC does not have CD-ROM, please download the software at <http://www.netcatcctv.com/download/ipc/PTZipc.rar>).

II, Find CMS (CMS V3.1.0.3.T.20150716) software and intall it on your PC. Then double click  icon.

Run CMS and choose language, then click OK



2,Login CMS

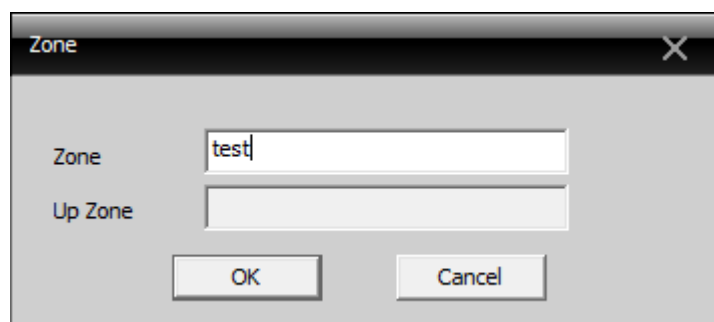
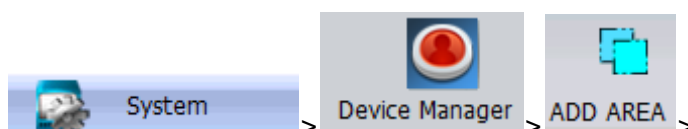
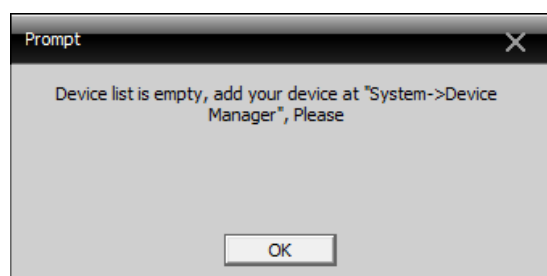
User name: super

Password: (empty) then click Login

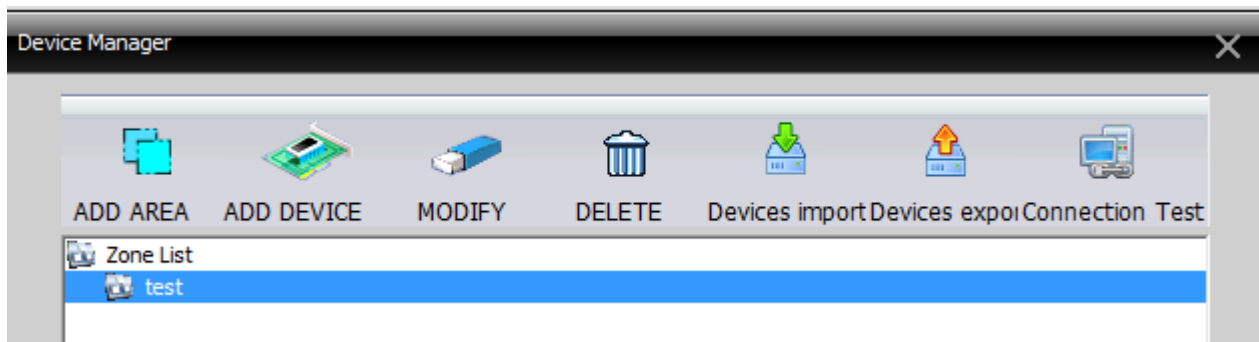


3,Add PTZ IP camera

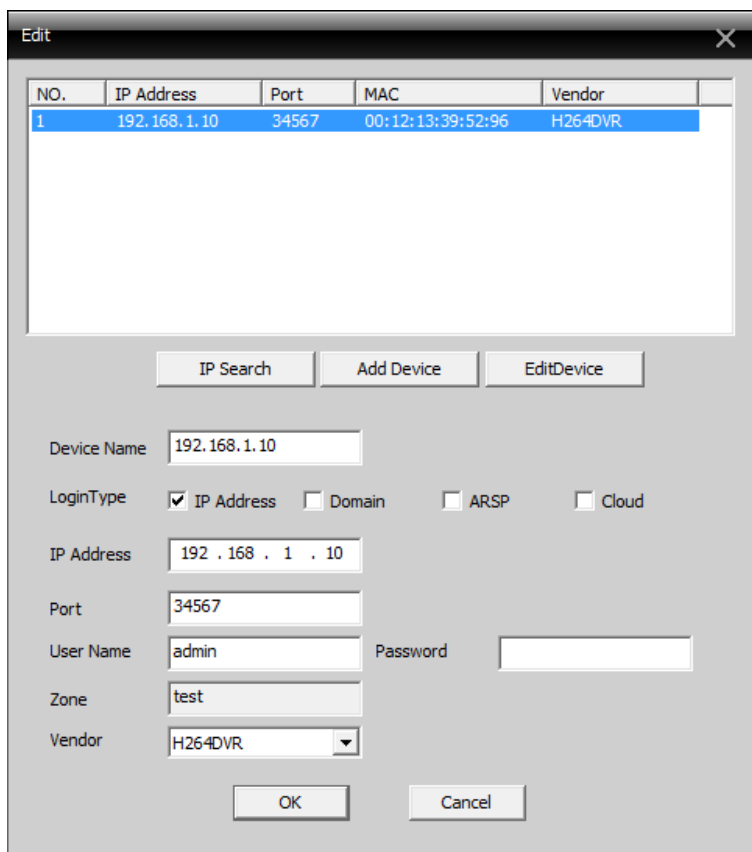
I,Please add your ip camera at Sysetm>Device Manager



II,Add a Zone(groups) and click “OK”

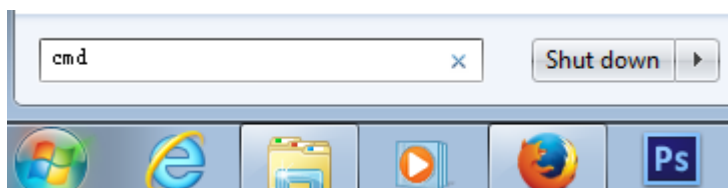


III,Click “test(Zone)”and click ADD DEVICE > Click “IP search”:



IV,Click ip address”192.168.1.10” and Click “ok”

Please make sure your computer's IP and camera's IP are under the same gateway
If you are unable to determine your computer IP address, please use the following method:
Please click “Start Menu” >run>input CMD>enter



You can see this PIC

Please type in “ipconfig”, then click “Enter”

```
Administrator: C:\Windows\system32\cmd.exe
Microsoft Windows [Version 6.1.7601]
Copyright (c) 2009 Microsoft Corporation. All rights reserved.

C:\Users\esunstar>ipconfig

Windows IP Configuration

Wireless LAN adapter 无线网络连接:

    Media State . . . . . : Media disconnected
    Connection-specific DNS Suffix . :

Ethernet adapter 本地连接:

    Connection-specific DNS Suffix . :
    Link-local IPv6 Address . . . . . : fe80::3d72:61f8:b41c:623b%11
    IPv4 Address. . . . . : 192.168.1.253
    Subnet Mask . . . . . : 255.255.255.0
    Default Gateway . . . . . : 192.168.1.1

Tunnel adapter isatap.{0F429980-6E26-448B-B14E-422A2DBDFE72}:

    Media State . . . . . : Media disconnected
    Connection-specific DNS Suffix . :
```

So your computer's ip address is 192.168.1.253, Gateway address is 192.168.1.1
If your computer network gateway is other IP address, pls change your camera's IP address as the following way.
Choose searched IP address, click EditDevice

NO.	IP Address	Port	MAC	Vendor
1	192.168.0.10	34567	00:12:13:39:56:03	H264DVR

IP Search Add Device EditDevice

Device Name: 192.168.0.10

LoginType: IP Address Domain ARSP Cloud

IP Address: 192.168.0.10

Port: 34567

User Name: admin Password: []

Zone: test

Vendor: H264DVR

OK Cancel

Click Auto Get

The 'Edit' window displays a table with the following data:

NO.	IP Address	Port	MAC	Vendor
1	192.168.0.10	34567	00:12:13:39:56:03	H264DVR

The 'EditDevice' dialog box contains the following fields and buttons:

- IP Address: 192 . 168 . 0 . 10
- Subnet Mask: 255 . 255 . 255 . 0
- Gateway: 192 . 168 . 0 . 1
- Auto Get (button)
- HTTP Port: 80
- Media Port: 34567
- MAC: 00:12:13:39:56:03
- Name: (empty)
- Password: (empty)
- Modify (button)
- Cancel (button)

At the bottom of the 'Edit' window, there are 'OK' and 'Cancel' buttons.

You can see the IP address is changed to correct one, then click Modify

The 'Edit' window displays the same table as above:

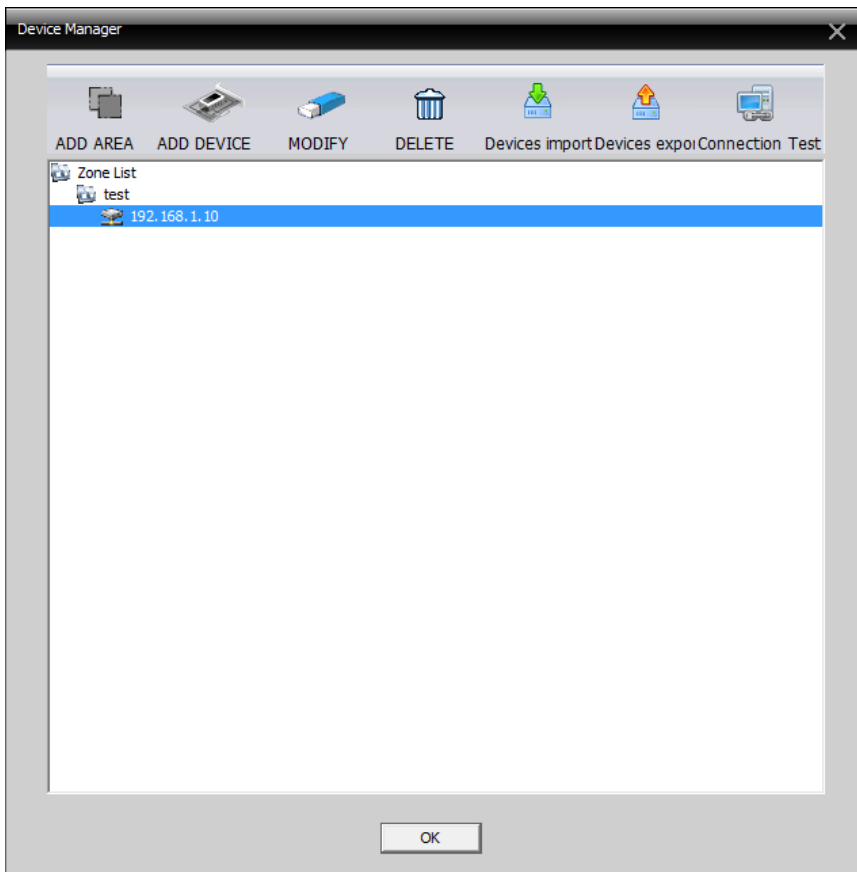
NO.	IP Address	Port	MAC	Vendor
1	192.168.0.10	34567	00:12:13:39:56:03	H264DVR

The 'EditDevice' dialog box now shows the following fields and buttons:

- IP Address: 192 . 168 . 1 . 10
- Subnet Mask: 255 . 255 . 255 . 0
- Gateway: 192 . 168 . 1 . 1
- Auto Get (button)
- HTTP Port: 80
- Media Port: 34567
- MAC: 00:12:13:39:56:03
- Name: (empty)
- Password: (empty)
- Modify (button)
- Cancel (button)

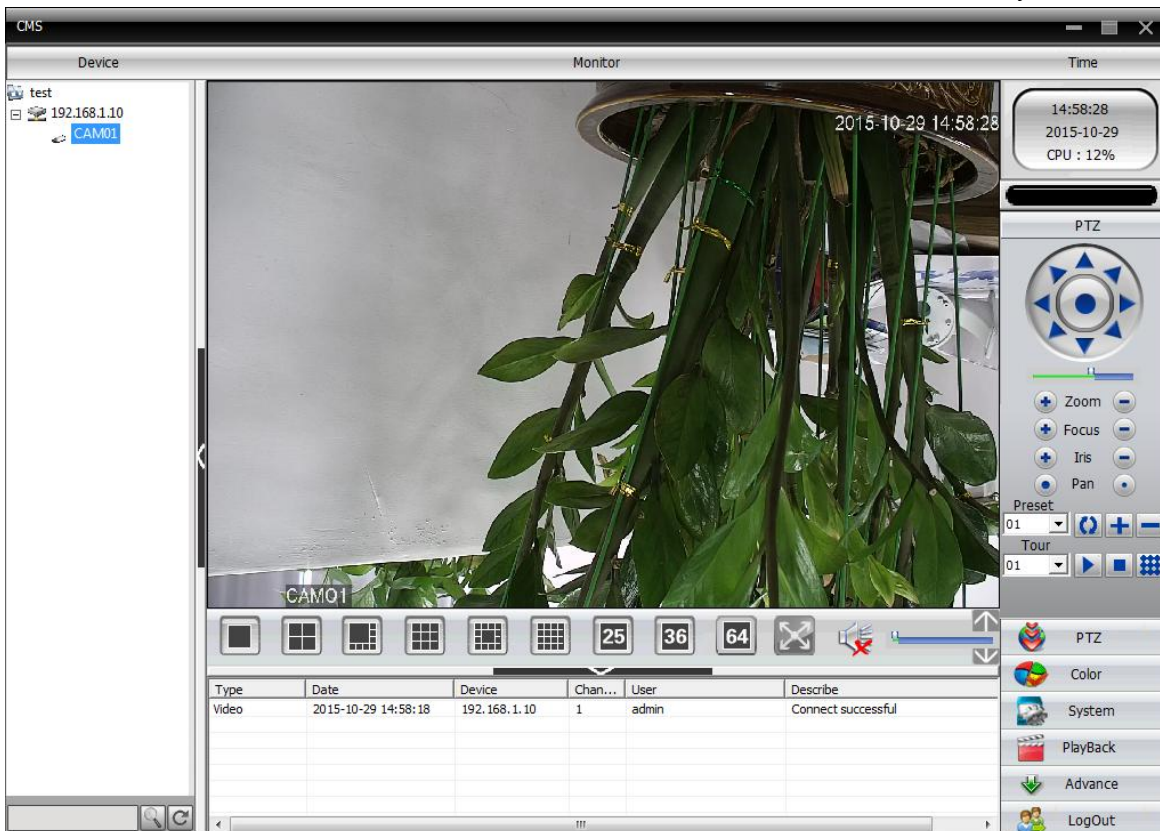
At the bottom of the 'Edit' window, there are 'OK' and 'Cancel' buttons.

V, Click **OK** go to CMS view



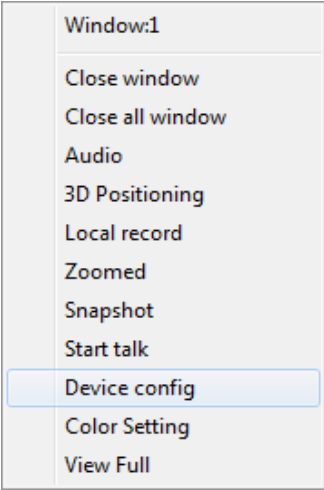
4, View IP camera:

Please double-click the device list 192.168.1.10, and then double-click CAM01, you can view IP camera in CMS

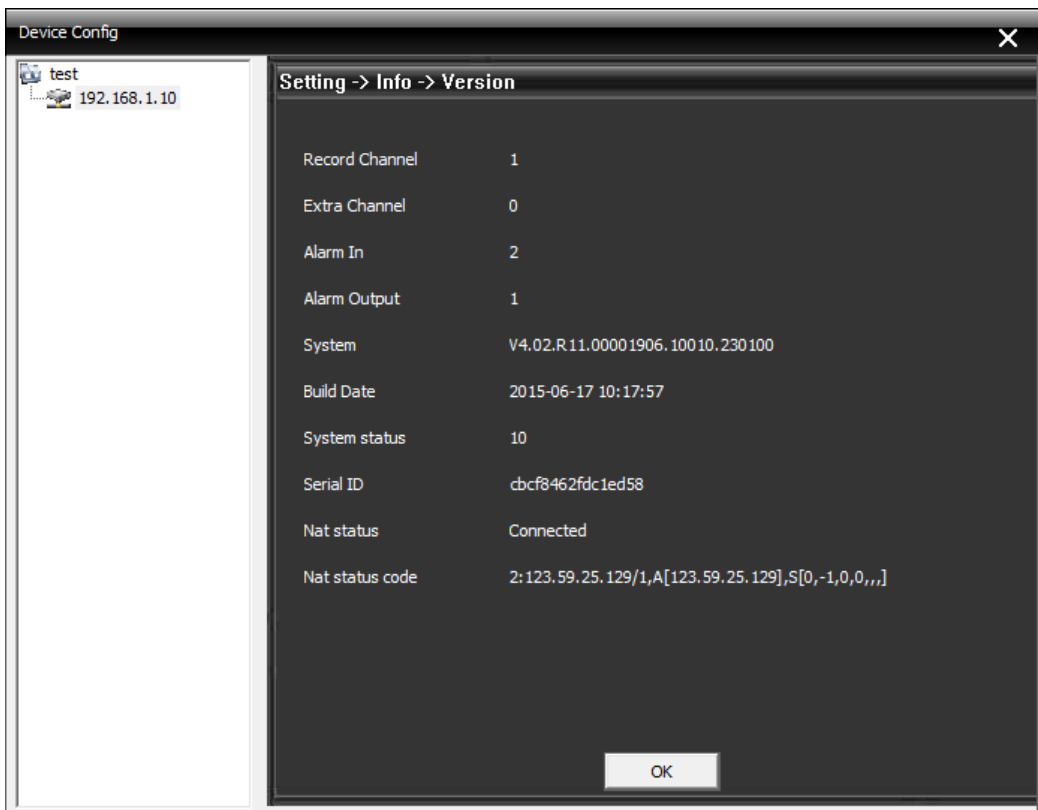
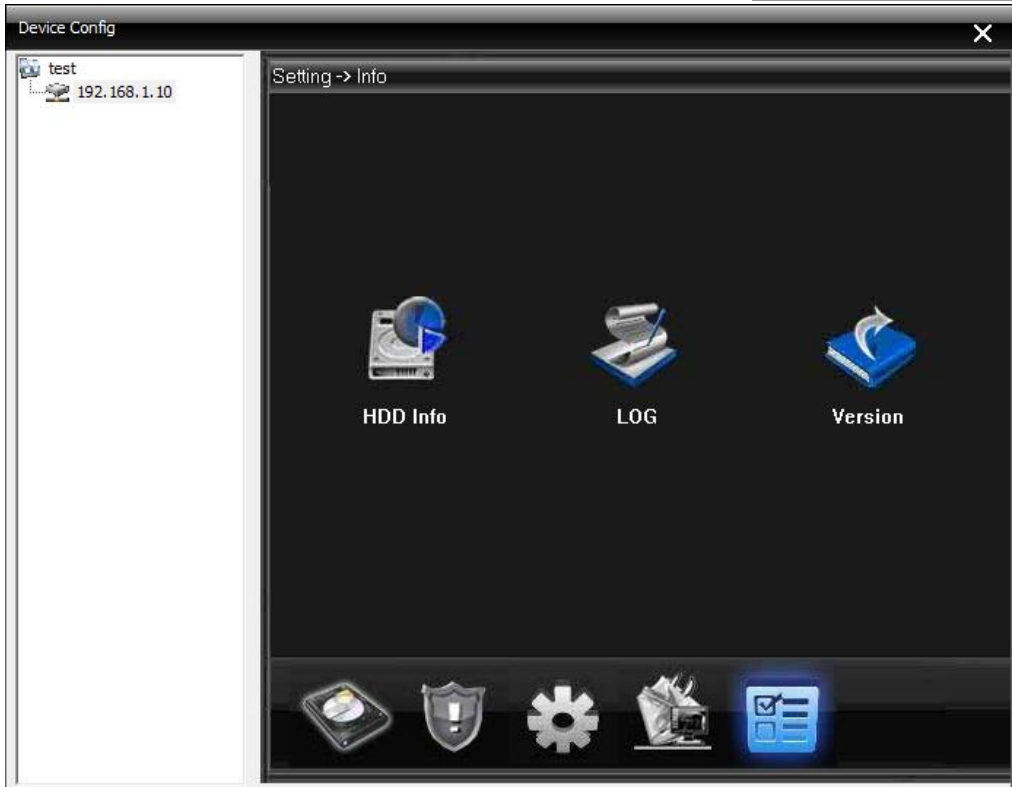


5, Remote Control (Use P2P Cloud Serial ID)

A,how to use P2P Cloud ID connect ip camera to CMS
Click the right mouse button on the monitor screen and
please choose “device config” in the pop-up dialog box”



Setting>info>version



Serial ID: **cbcf8462fdc1ed58**, this is P2P cloud serial ID

Nat status: Connected, This means the camera P2P network connection is enable

Return to the add device interface, first choose Cloud as login type, then input Serial id, last click “OK” to Complete remote add

NO.	IP Address	Port	MAC	Vendor

Device Name:

LoginType: IP Address Domain ARSP Cloud

Serial ID:

User Name: Password:

Zone:

Vendor:

Buttons: OK, Cancel

Device List:

- test
 - 192.168.1.10
 - CAM01
 - p2p cloud
 - CAM01

Time: 15:19:42, 2015-10-29, CPU: 24%

PTZ Controls: Zoom, Focus, Iris, Pan, Preset, Tour

Type	Date	Device	Chan...	User	Describe
Video	2015-10-29 15:19:37	p2p cloud	1	admin	Connect successful
Video	2015-10-29 14:58:18	192.168.1.10	1	admin	Connect successful

B, how to use P2P Cloud ID connect ip camera to Phone

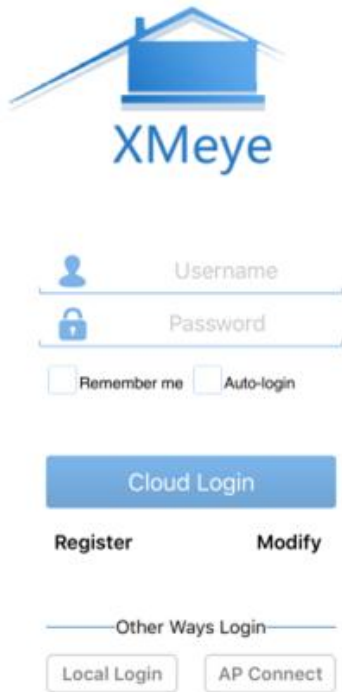
If your phone is android system, please download “XMEye” and install it in your phone

If your phone is iphone system, please download “XMEye” in App store and install it in your iphone.



Run

..... 中国电信 15:34 60%



XMeye

Username

Password

Remember me Auto-login

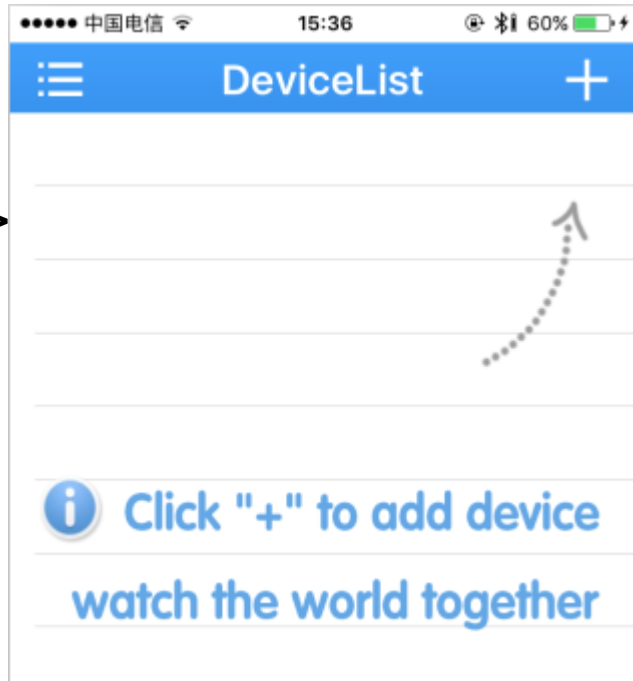
Cloud Login

Register Modify

Other Ways Login

Local Login AP Connect

>>>



DeviceList

Click "+" to add device

watch the world together

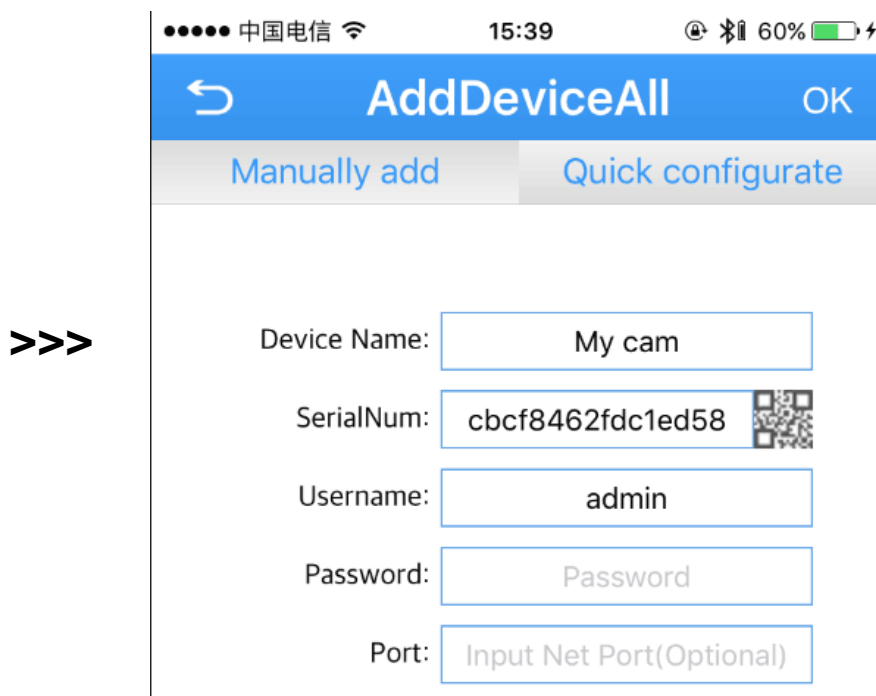
>>>

We choose Local login

Add ip camera

Input name and serialnum(Serial ID: cbcf8462fdc1ed58)

And click OK



AddDeviceAll

Manually add Quick configurate

Device Name: My cam

SerialNum: cbcf8462fdc1ed58

Username: admin

Password: Password

Port: Input Net Port(Optional)

>>>

>>>

Click this ip camera,

