

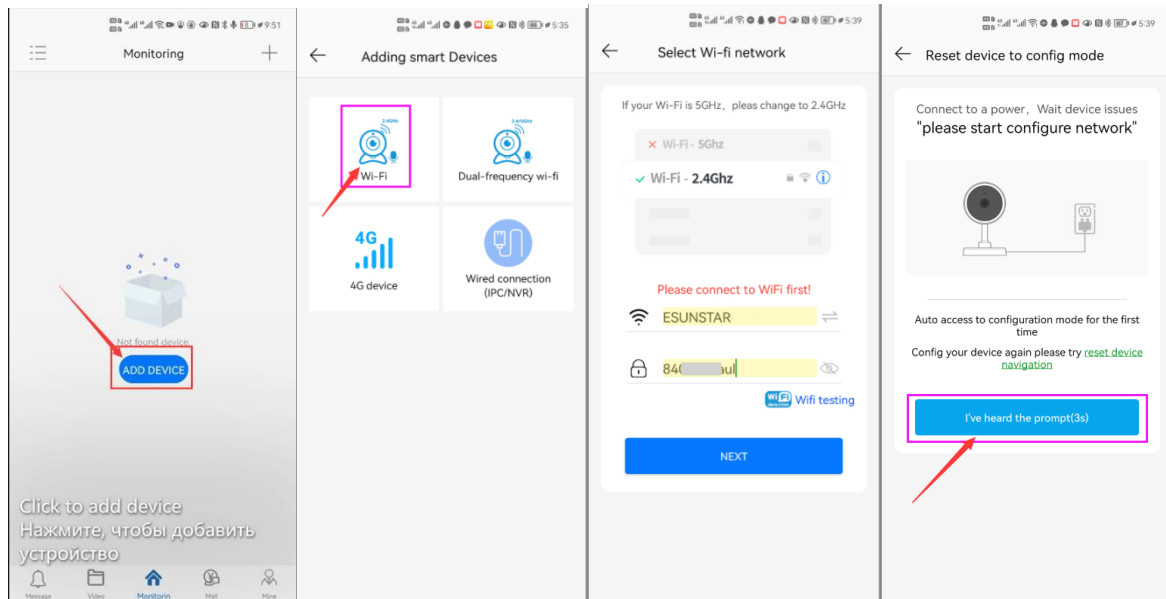
YUCHENG PTZ IP Camera Manual

[Part 1: Connect and manage cameras using mobile APP]

Please go google play or Apple store download mobile APP,the name is Videolink and install it into your mobile phone
The first time you run the APP, (<http://www.esunstar.net/Videolink-Download.html>).you need to register an account. You can use your email or mobile phone number to register an account, and then use the registered account to log in to the APP.

[1], Configure the camera using WIFI(If your camera support Wifi)

1. If your camera has WIFI function. Before connecting the power adapter of the camera, please make sure that the LAN port of the camera is not connected to the Ethernet cable (if you have connected it, please disconnect it and press the reset button for 5 seconds to restore the camera to factory settings). After connecting the power, wait 10 seconds.
2. Before using the mobile APP to configure the camera, please connect your mobile phone to your WIFI router via WIFI.
3. Open the APP and click the Add button to add a camera (as shown in Figure 1). And select WIFI (as shown in Figure2), the software will automatically obtain the WIFI of the mobile phone, and please enter the WIFI password (the WIFI connection password of the wireless router). Click Next (as shown in Figure 3)



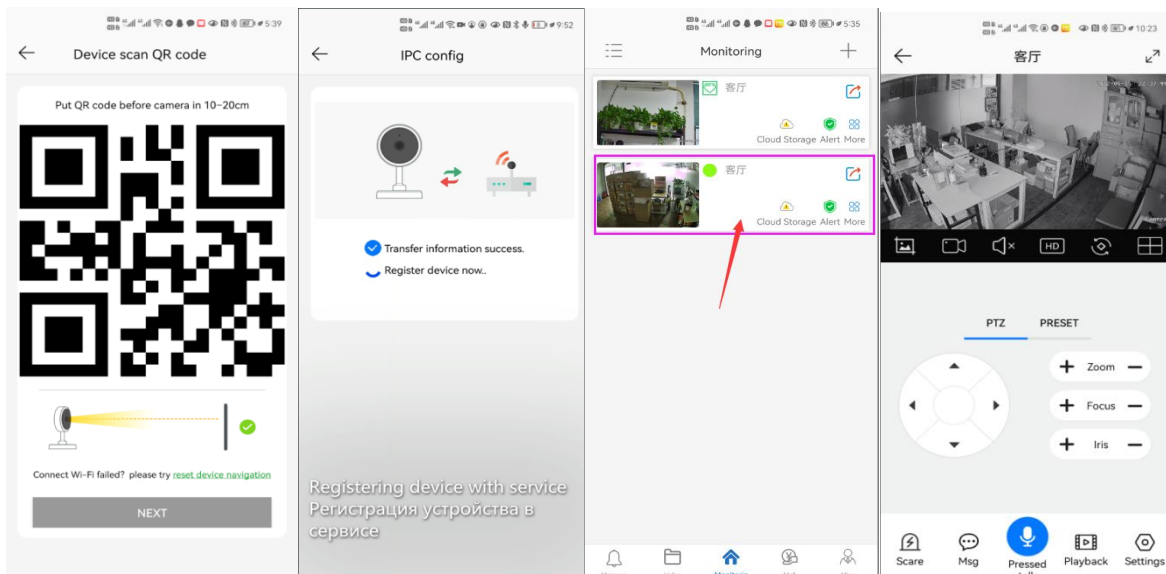
1

2

3

4

After entering the interface of Figure 4, wait for a few seconds, the APP will automatically enter the interface of Figure 5, and the camera will start to match the code through sound waves. When you hear a "di" on the phone, it means that the camera is successfully connected to your wireless router via WIFI (as shown in Figure 6). If your camera does not have a microphone and a speaker at the same time, the sound wave code matching cannot be completed, but you can also add the camera after aligning the QR code on the phone screen with the camera lens. Click the camera on Figure 7, and you will enter the camera's monitoring and management interface (as shown in Figure 8). The camera has been added successfully.



5

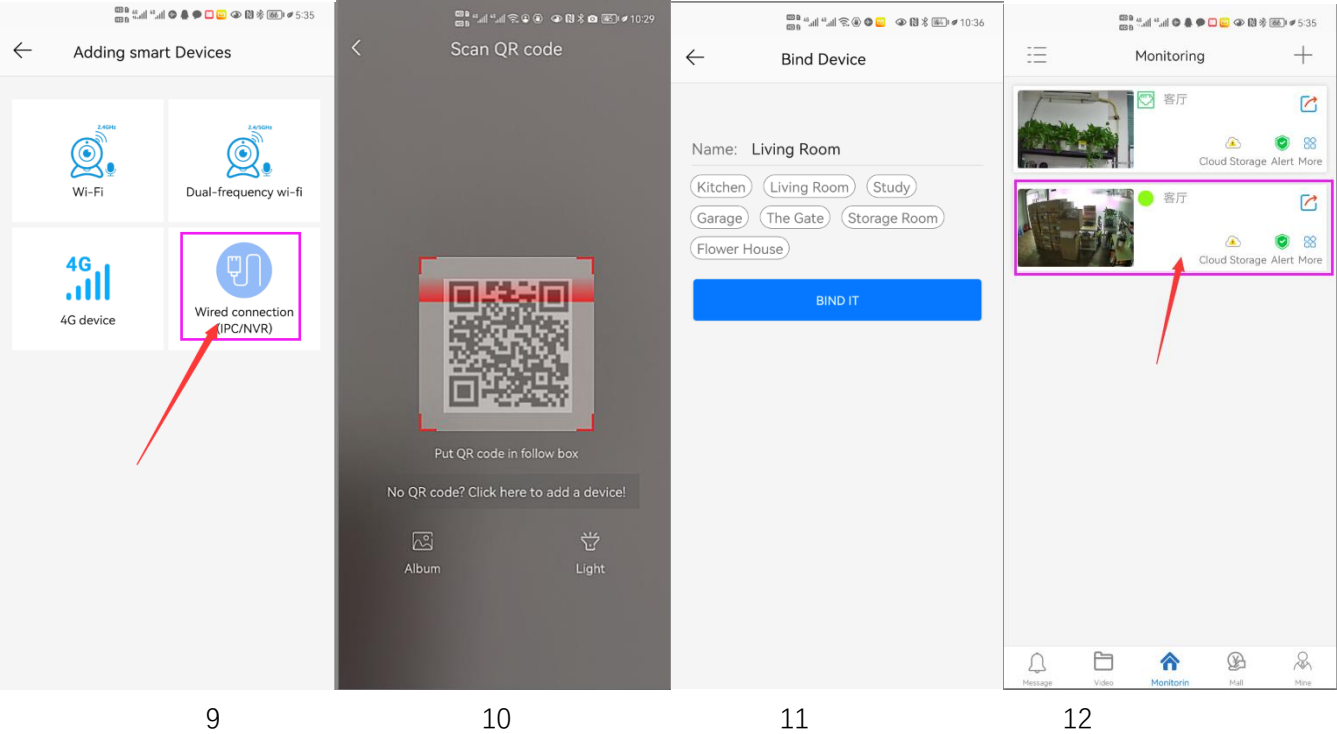
6

7

8

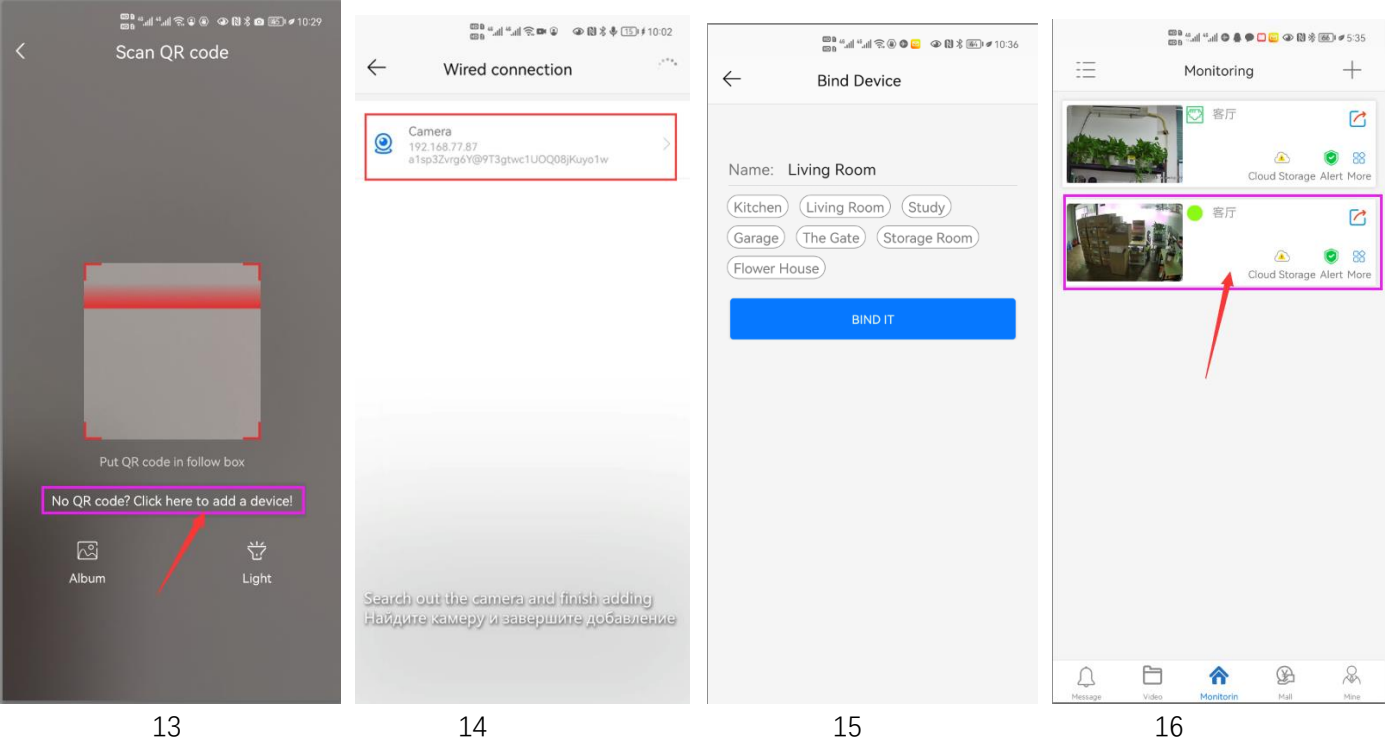
[2], Add a camera by scanning a QR code

If your camera does not have WIFI function, please connect the ethernet cable to your switch/router and connect the power adapter. Select "Wired connection camera", as shown in Figure 9, enter the interface of scanning the QR code to add a camera, point the mobile phone at the QR code on the camera body to scan (as shown in Figure 10), after scanning is successful, please provide your Customize a name for the camera, and click "BIND IT" to complete the addition (as shown in Figure 12)

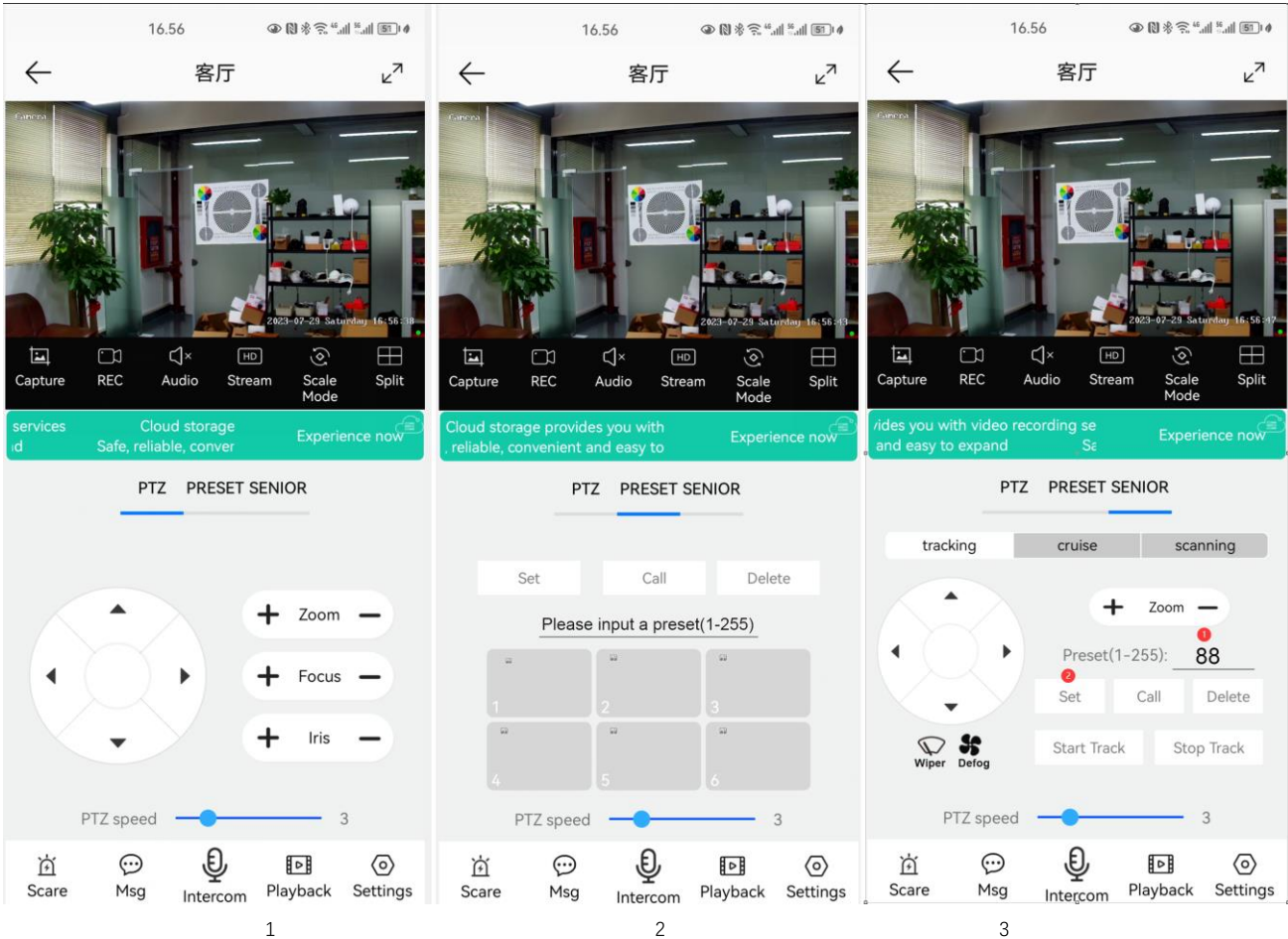


[3], Add cameras via LAN connection

If the QR code cannot be found on the camera, you can click "Click here to add a device" to add the camera through the LAN search (as shown in Figure 12), enter the search page, and the APP will automatically search for the camera, as shown in Figure 13 display, and then click the camera to complete the addition.



[4],How to Turn on/off auto humanoid Tracking



Fixed Position Tracking

- 1,Control the PTZ button to rotate the camera to your desired position (set a Return position)
- 2. Switch the PTZ control interface to “SENIOR” setting interface.
- 3,Input 88,Then click “Set” button.The tracking return position(Home position) set successfully
- 4,Click “Start Track” button, The camera will automatically turn on the tracking function
- 5,Click “Stop Track” button,the camera will automatically turn off the tracking function

Cruise tracking:

Before turning on cruise tracking, you need to set the camera's cruise point in “Preset”. A maximum of 64 preset points can be set. These cruise points are the few locations you want to monitor. The camera will cruise back and forth between these locations to find a tracking target. Really made a camera monitors multiple angles of demand. Turn on cruise trackingfunction,The camera will cycle moving through the preset cruise points. When the person is detected, the camera will turn on the tracking. After the tracking is completed, the camera automatically resumes the cruise until the next time the person is detected, the tracking is turned on again

Set 1,2,3,4...max 64 preset position,Then call 98th preset camera will auto turn on cruise tracking. Setting method: [98]+[Call] for turn on cruise

Wiper and defogging:



- Click “ ”the wiper button on the app, and the camera will automatically turn on the wiper and continue to operate 3 times to clear any debris on the glass.(Repetitive operations can be performed.)
- Click“ ” the fan button on the APP will automatically activate the fan defogging function. Every time it is turned on, the fan defaults to working for 1 hour and supports customization (1-24 hours)

Part 2: Add and manage cameras using PC software

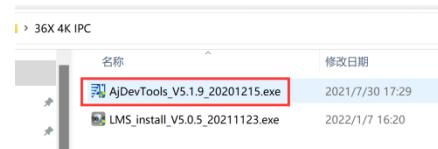
All software and manual download weblink:

<http://www.yucvision.com/video/link>



[1], Install search tool on your PC (http://www.yucvision.com/upload/file/AjDevTools_V5.4.2_20221024.exe)

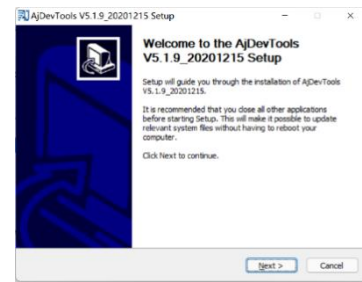
1, Run "AjDevTools_V5.1.9_20201215.exe" and complete the installation



1

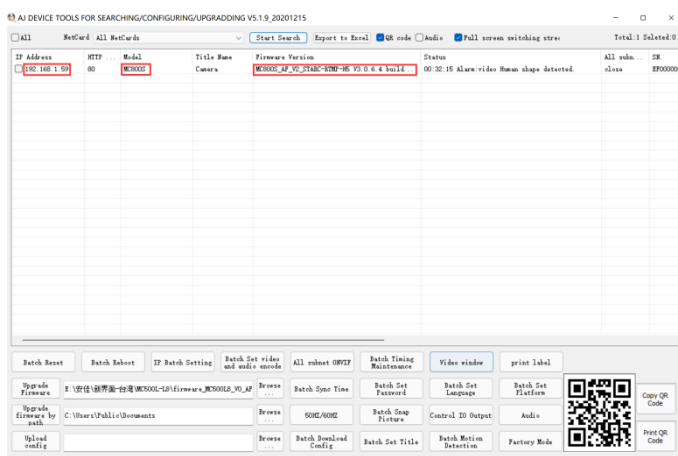


2

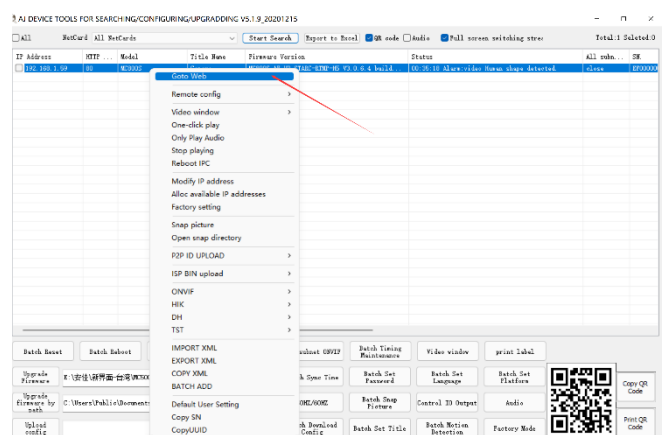


3

2, Run the software, as shown below (4)



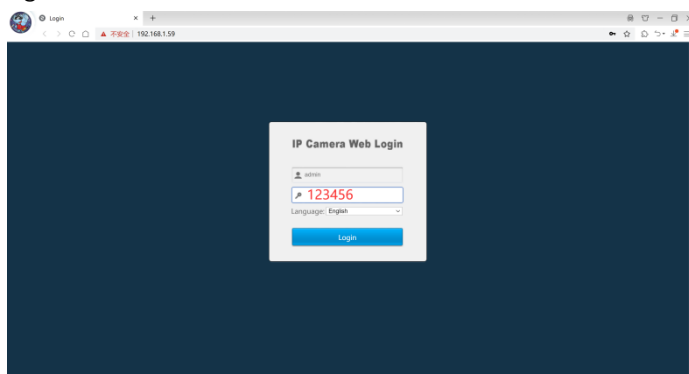
4



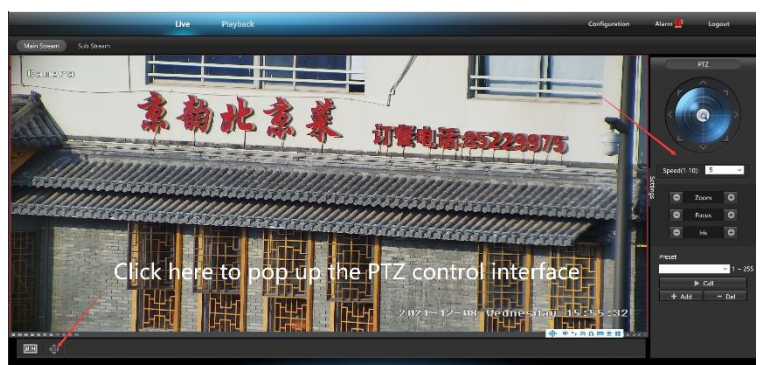
5

3, Here you can modify the IP address of the camera, upgrade the firmware and other parameter settings. Right-click on the IP address to open the camera with a browser, as shown in the figure 5.

4, Enter the browser login interface, login user name: admin, password: 123456, as shown in the following figure (if the browser prompts you to download and install the plug-in, please download and install it): Then click login, as shown in the figure 7



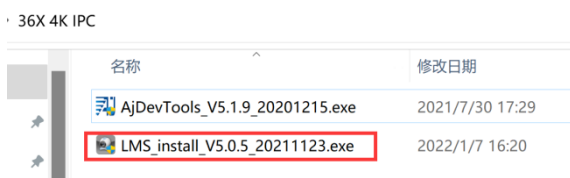
6



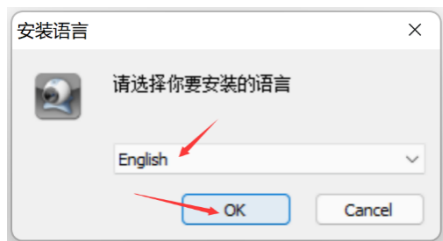
7

[2], Use PC software to search and add cameras ([http://www.yucvision.com/upload/file/LMS_install_v5.0.9_20220923\(KP\).exe](http://www.yucvision.com/upload/file/LMS_install_v5.0.9_20220923(KP).exe))

1, Install the LMS computer software.



8



9

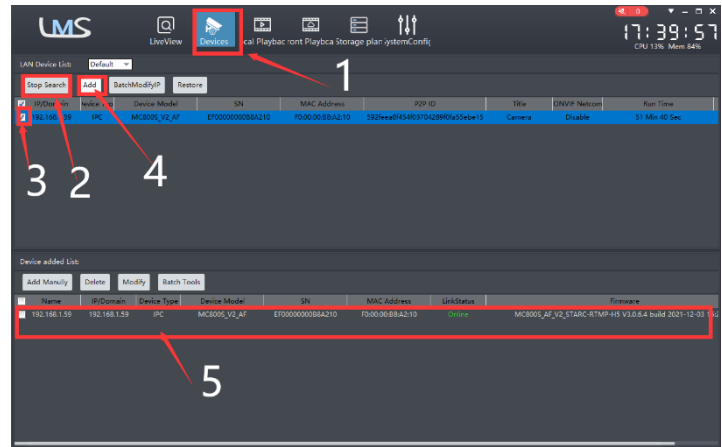
The software supports English, Simplified Chinese and Traditional Chinese (if you want to support other languages, we can provide you with language packs, you can translate into the language you want, and then we can provide you with software customization)

2, Follow the prompts to complete the software installation

3, Run the LMS software:user:admin,password:123456



Click LOGIN to log in to the software



10



11

4. Search and add cameras.Click “Devices>””Start Search”>click“3”>add >successfully added, as shown in the figure 10

Then click”  ” go to Liveview, as shown in the figure 11

Double click on the IP address and the video will automatically appear in the video box on the right.

[3], Preview and control cameras with videolink PC software

1, Double-click the Videolink PC software in the directory, follow the prompts to complete the installation of the camera, and then run the camera. http://www.yucvision.com/upload/file/Videolink_install_V2.0.0_20230613.exe

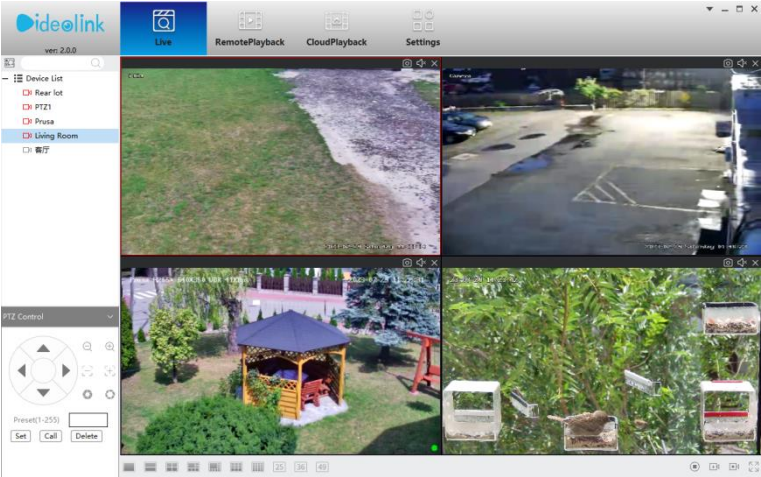
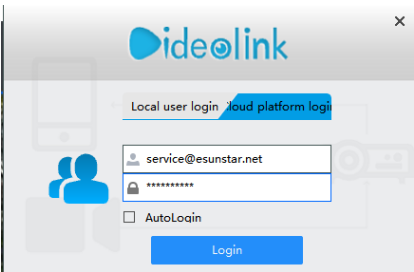
2,run and login Videolink,

The username and password here are the account you registered for the first time on your mobile phone.

Click login button go to Videolink

You will see all the cameras under your account, you can preview the

cameras and view the video playback in this way

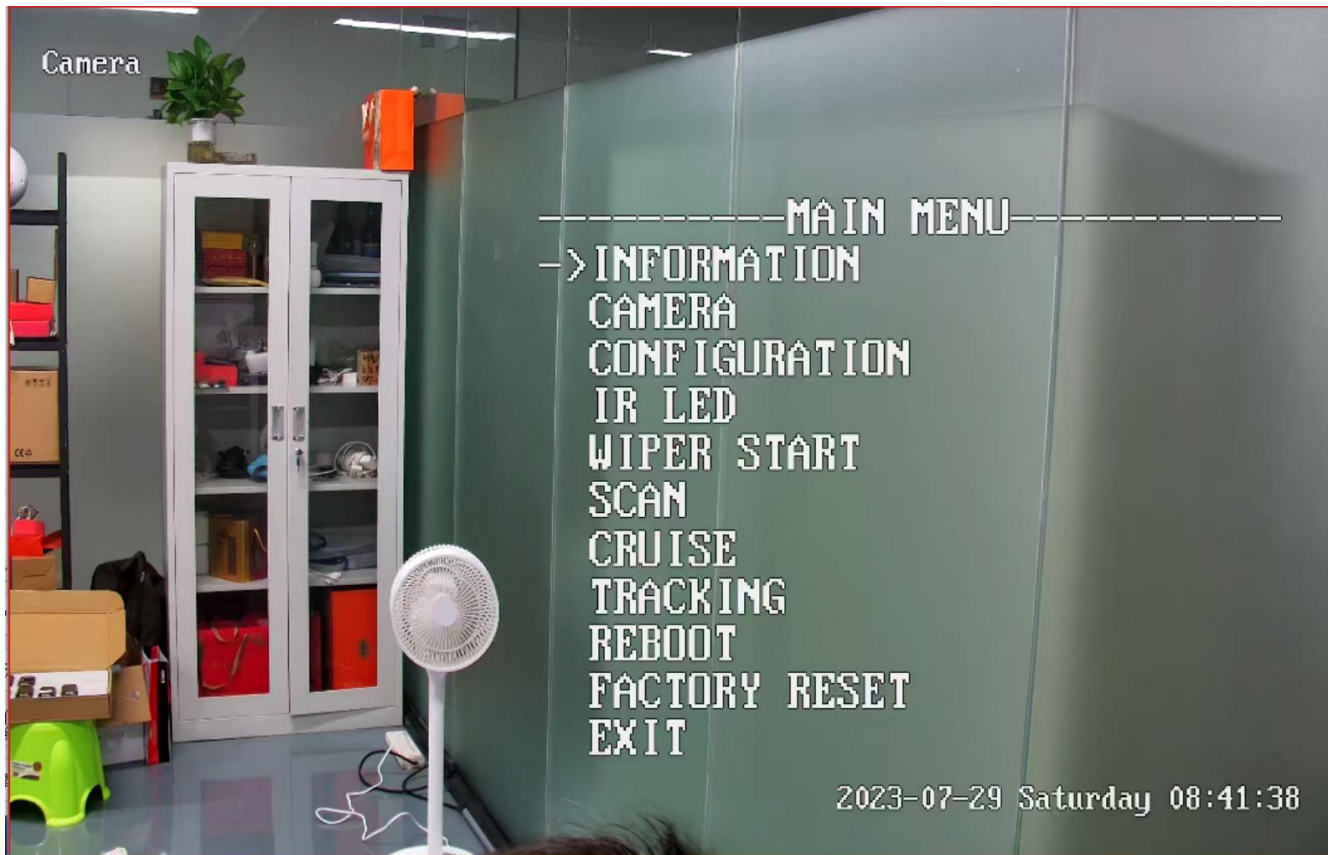
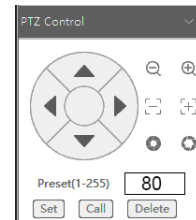


Part 3 【OSD menu operation】

1. Enter the PTZ control interface, enter 80 at the preset position, and then click "Call". The control menu will appear on the right side of the video.

2. On the PTZ control interface, click the up (▲) or down (▼) button to move the cursor of the menu,

and click left (◀) or right (▶) to execute parameter selection.



3. The control menu interface is as follows:

OSD MENU LIST

Main Menu

INFORMATION

```
'DOME VERSION'  
'CAM VERSION'  
'CAM TYPE'  
'Focus Mode:PTZ PUSH/ZOOM PUSH/AUTO  
'Focus Limite:30CM/1M/1.5M/3M/6M  
'ZOOM Display:ON/OFF  
'IRIS Mode:Fix  
'IRIS SIZE DAY:10MM  
'IRIS SIZE NIGHT:10MM  
'DEFAULT
```

CAMERA

CONFIGUARTION

```
'COORDINATE DISPLAY:OFF/ON  
'AUTO CALIBRATION:ON/OFF  
'MANUAL SPEED:1-10  
'IDLE ACTION:OFF/PRESET-1/CRUISE/SCAN  
'IDLE TIME:1-10(minute)  
'GUARD:_____  
'FAN:_____
```

GUARD PRESET:IS NOT SET
GUARD TIME:1-30
GUARD PRESET SET — CALL 80 SET GUARD...
GUARD PRESET CLEAR
FAN OFF COUNTDOWN 00:00:00
FANDOME:OFF/ON
OFF DELAY<HOUR>:1-24

IR LED

WIPER START

```
'LED MODE:CAMERA  
'CURRENT ILLUMINANCE:220  
'LED ON ILLUMINANCE:1-10  
'WHITE OFF ILLUMINAN:1-255  
'NEAR POWER:1-10  
'FAR POWER:1-10  
'WHITE POWER:1-10  
'SWITCH ANGLE:1-30 ZOOM  
'RESET DEFAULTS
```

SCAN

```
'SCAN SPEED:1-10  
'LEFT SET _____ CALL 80 SET SCAN LEFT...  
'RIGHT SET _____ CALL 80 SET SCAN RIGHT...  
'SCAN START
```

Cruise

```
'CRUISE PRESET:1-32  
'SPEED:1-10  
'INTERVAL:1-255  
'START
```

Tracking

Reboot

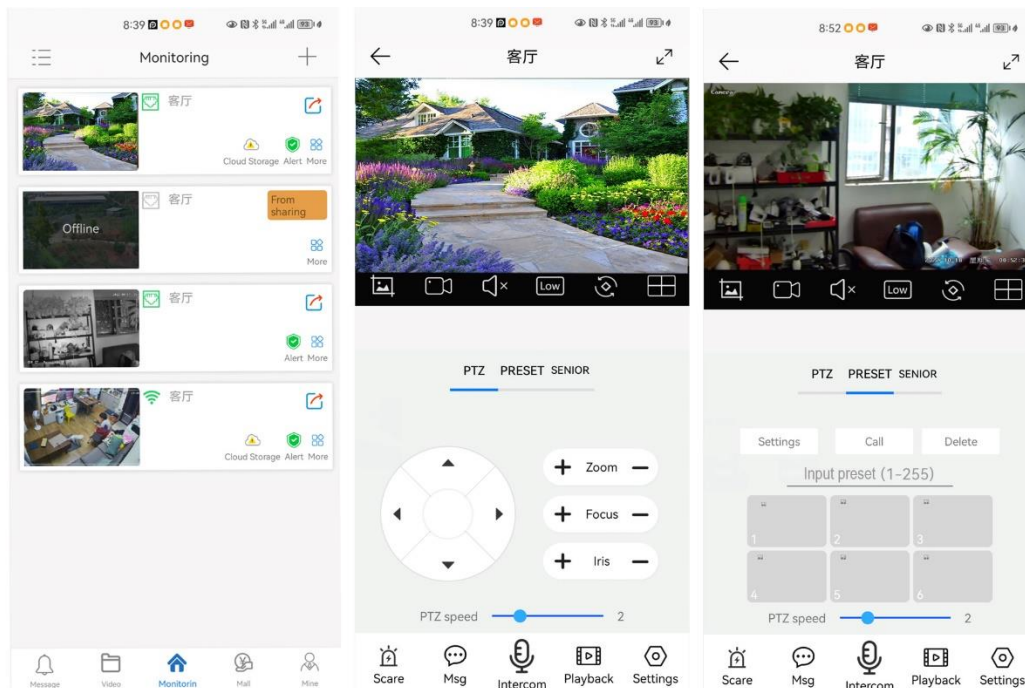
Factory Reset

Exit

```
'TRACKING:OFF/ON  
'ZOOM:OFF/ON  
'RETURN PRESET SET _____ CALL 80 SET RETURN PRESET ...
```

Part 4 【Function Operation and Description】

Professional name explanation: Settings/Add:set preset, Call:Call preset, [N]+[set]=Enter N first and then click SET.“+”=Then



1.Preset settings

Rotate the camera to the position you want, then set this position to “N” preset

[N] +[SET] ,N is preset point, 1-255 number can be optional (But the command Preset isn't include). Set= set preset

2.Call preset(need set the corresponding preset point) : [N]+[CALL]

N for preset point, 1-255 number can be optional, camera can move to preset point after call, Zoom, focus and aperture lens will automatically change to preset parameters , camera preset display on the monitor.

3.Delete all preset point: [100] +[CALL] ,Call no.100 preset, clear the all preset :[1]+[0]+[0]+[CALL] .

4.Auto scan(Horizontal rotation)

[120]+[CALL], call No.120 ,the lever of 360 degree clockwise automatic scanning

Modify speed of Auto scan :

[121]+[Set] +[N]+[Set]; (N=1-10; N represents scan speed percentage,default is 8=80%)

If you want to change speed of auto scan to **50%**; Setting method: [121]+[Set] +[5]+[Set]

5.The inspection group programming

Before you start cruising, you first need to set the preset position in the cruise path.**Please refer to “ 3.Preset settings”**

[101]+[CALL] for Open the first Cruise of 1-64 to scan ;

Modify the stay time of the Cruise:

[123] +[Set] + [N]+[Set]; (N=3-10; N represents the dwell time at each preset,default is 5 seconds)

If you change the dwell time to **10 seconds**. Setting method:[123]+[Set] + [10]+[Set]

Modify speed of the Cruise:[115]+[Set] + [N]+[Set]; (N=1-10; N represents Cruising speed percentage,default is 8=80%)

If you change speed of the Cruise to **40%**; Setting method:[115]+[Set] + [4]+[Set]

6,Left and right limit scan settings

The users can set left and right limit point in the range of the rotation, the speed dome can return scan in setting range

[81]+[SET]: left limit; [82]+[SET]: right limit, [83]+[CALL]: start right and left limit scan

Modify the speed of right and left limit scan:

[141] +[SET]+[N] +[SET]; (N=1-10; N represents Cruising speed percentage,default is 5=50%)

If you change speed of the limit scan to **100%**; Setting method:[141]+[Set] + [10]+[Set]

7.Idle action settings:The camera performs a certain function in standby mode

[130]+[set]:OFF Idle position set

Idle position setting:[131]+[Set]+[N]+[Call],

N=Function preset;When N=98, the camera Open the first Cruise of 1-16 to scan function. Setting method:[131]+[SET]+ [98]+[CALL]

Set the time when the idle action start: [132]+[set]+[N]+[SET]; (N=1-30; N represents Idle time,default is 5 minutes)

8.Restore factory settings for Speed dome

[106]+[Call]+[64]+[CALL] for restore PTZ speed dome to factory setting; Setting method:[106]+[Call]+[64]+[CALL]

Part 5 Speed dome Command Table

Command Name	Function description	NO.	Call	Set
Tracking Command				
Set a Return Position	This position is the initial position where the camera starts tracking/the automatic return position after tracking:88+set	88		√
Turn on fixed-point tracking	Turn on tracking based on initial position:97+call	97	√	
Set tracking return time	The time when the camera automatically returns to the initial position after the tracking target disappears:153+set+N+set,N=1-15 seconds, default N=5	153		√
Turn on cruise Tracking	Camera activation is based on preset position cruise tracking (some preset positions need to be set first (range: 1-32):98+call	98	√	
Turn off all Tracking	96+set	96		√
tracking Enable ZOOM	The camera automatically ZOOM when tracking:95+set (default)	95		√
Tracking invalid ZOOM	The camera invalid ZOOM when tracking , 95+call	95	√	
Set continuous Tracking	As long as the tracking target does not disappear, the camera will continue to track :92+call+7+call (default Enable)	92	√	
Time limited tracking	The camera automatically returns to the initial position when the camera continuously tracks the target for a certain time :92+call+8+call	92	√	
Settings Time limited tracking time	93+call+N+call (N=1-60 秒) , default N=20 seconds	93	√	
Precautions for time limited tracking	1. After switching time limited tracking for the first time, you need to set the tracking time and then turn on tracking. 2. After setting the tracking time, switch to the time limited tracking mode again, and then turn on tracking.			
Set tracking Pan speed	150+set+N+set, N=1-100,default N=60	150		√
Set tracking Tilt speed	151+set+N+set, N=1-100, default N=40	151		√
Recover tracking time	Automatically recover the fixed point tracking time after manually controlling the camera :158+set+N+set, N=1-10 minute , default N=1 minute	158		√
Wiper control	71+call (after executing once, the wiper will automatically stop after wiping 3 times, and can be operated repeatedly)	71	√	
Defog control	72+call: Enable defogging function. 72+Settings: Turn off the defogging function. Set the working duration of defogging: 73+settings+N+settings, N=1-24 hours, default N=1 hour	72	√	
Defog time	Set the working duration of defogging: 73+settings+N+settings, N=1-24 hours, default N=1 hour (automatically closed after 1 hour of activation)	73		√
OSD Menu control	Called by 80+, the screen camera control menu can be opened, and the PTZ control direction key is used for rotation and setting.	80	√	
General function setting of Speed dome				
Modify manual control Pan Speed	160+set+N+set, N=1-10, default N=8	160		√
Modify manual control tilt Speed	161+set+N+set, N=1-10, default N=8	161		√
360°Pan scanning	120+call	120	√	
Modify Pan scanning	121+set +N+set, N=1-64,default N=6	121		√
Area scanning				
Set Left Border	Set the leftmost position of area scanning , 81+set	81		√
Set right Border	Set the rightmost position of area scanning , 82+set	82		√
Turn on area scanning	83+call,	83	√	
Modify Area scan speed	Modify Area scan speed , 141+set+N+set, N=1-40, default N=6	141		√
Cruise				
Turn on cruise	101+call	101	√	
Modify cruise speed	115+set+N+set, N=1-40,default N=20,N	115		√
Modify cruise dwell time	Modify the dwell time at each preset position :123+set+N+set, N=1-64seconds, default N=9	123		√
Turn on/Off return(home)position	Rotate the camera to the position you want, then set 125([125]+[PRESET]), and the current position is the Retrun position, and turn this feature on. When the camera is in standby, the camera will automatically rotate to this position	125		√
Delete watch position		125	√	
Turn on speed ratio	he larger the ZOOM, the slower the rotation speed(default)	108	√	
Turn off speed ratio	ZOOM changes, rotation speed remains unchanged	108		√
Reboot speed dome	107+set+64+call	107		√
Reset speed dome	106+call+64+call	106	√	
Del all preset	100+call/140+call	140	√	